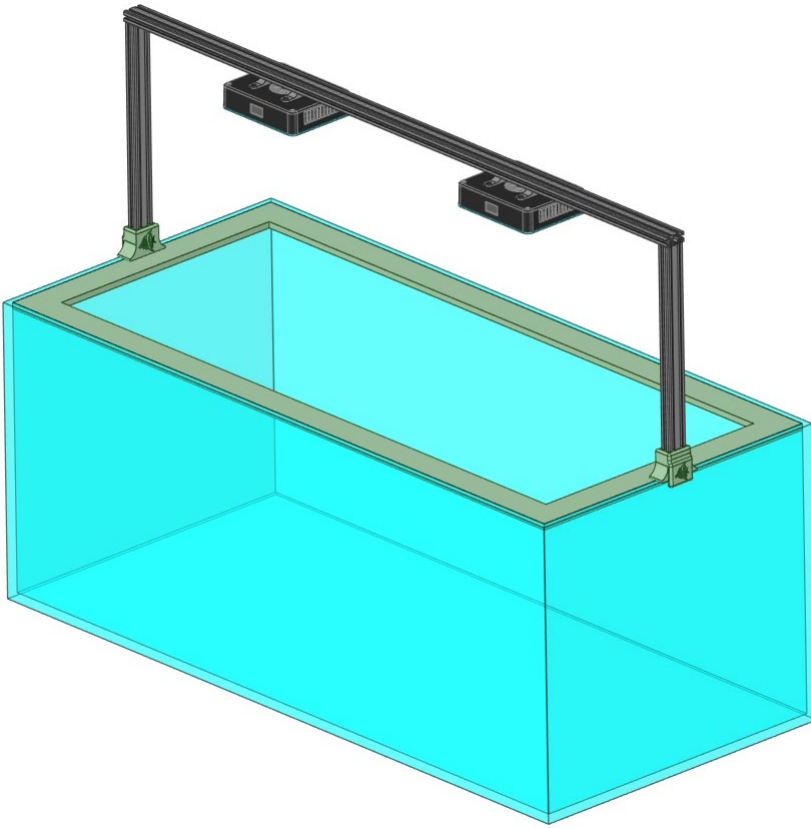
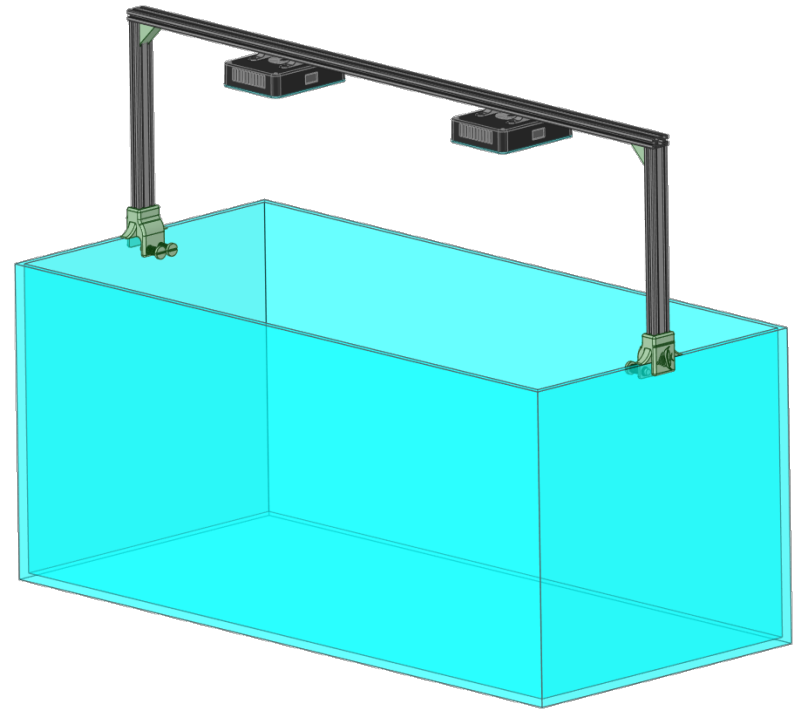


# 2040 Across Tank Mount for Uno Assemble Instructions

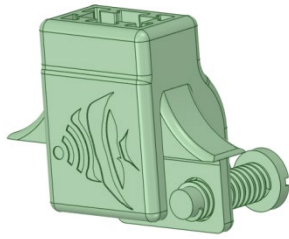


Eurobraced Tank

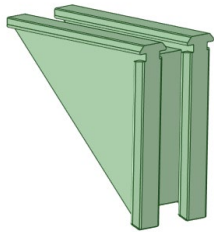


Rimless/Standard Tank

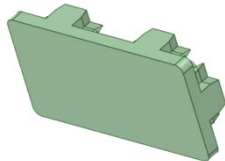
# Parts List



Custom 2040 Across Tank  
Mounts (2 pcs)

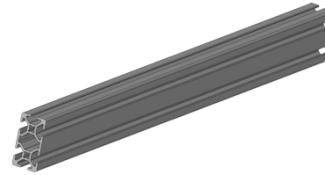


2040 Corners (2 pcs)  
*For Rimless/Standard Only*

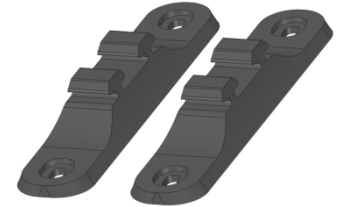


2x 2040 black end cap

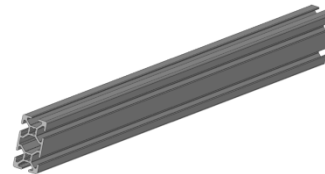
3D Printed Parts



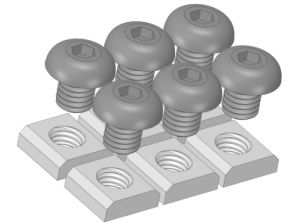
2x Vertical 2040 Black  
Anodized Aluminum



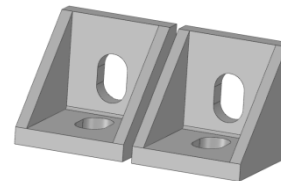
2040 Slide-On Adaptors set  
for ReeFi Uno



1x Horizontal 2040 Black  
Anodized Aluminum



8x M5 T nuts and screws  
*Required for Eurobraced*



Black Anodized Corner Brackets  
set (4 pcs)  
*Required for Eurobraced*

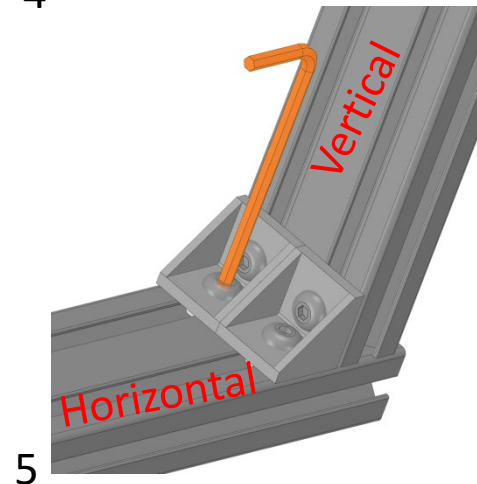
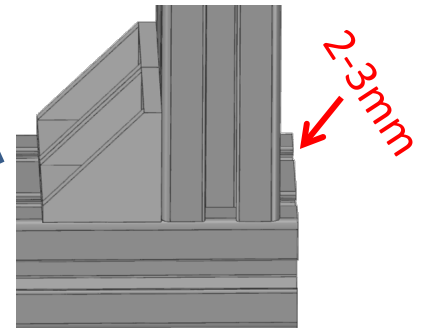
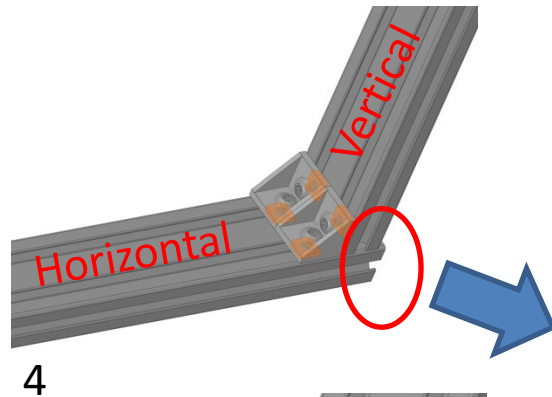
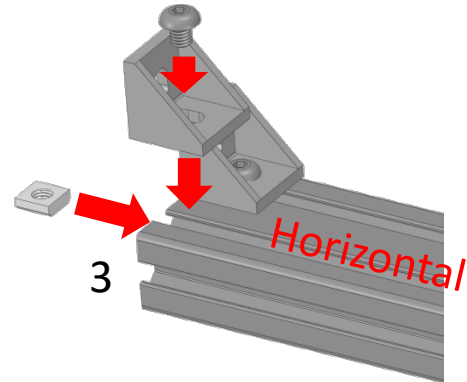
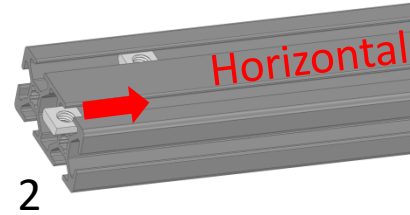


3mm hex wrench  
*Required for Eurobraced*

**Not included**

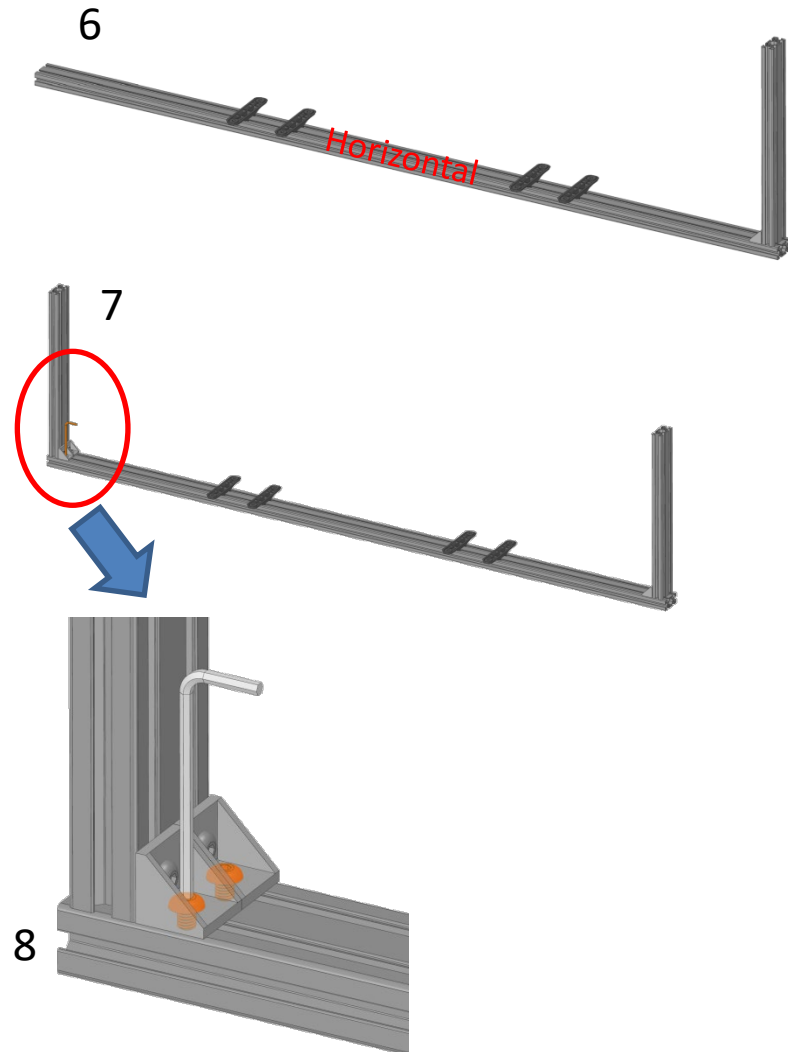
# Eurobraced Assemble Instructions

1. Do not assemble over the aquarium.
2. Slide 2 T Nuts into the Horizontal 2040 Aluminum as shown.
3. Lightly attach 2 L Brackets to Horizontal 2040 Aluminum with 2 T Nuts and 2 M5\*6 screws.
4. Lightly attach the Vertical 2040 Aluminum to the 2 L Brackets with 2 T Nuts and 2 M5\*6 screws as shown.
5. Ensure the Horizontal 2040 Aluminum extend pass the Vertical 2040 by 2-3mm. Then use the 3mm Hex Wrench to tighten down all 4 screws.



# Eurobraced Assemble Instructions

6. Slide in 2040 Slide-On Adaptors for Uno onto the Horizontal 2040, 2pcs for every ReeFi Uno series.
7. Repeat Steps 2-5 for the other Vertical 2040.
8. **For this end only, now slightly loosen the 2 M5\*6 Screws attached to the Horizontal 2040 as shown.** This will allow you to slide the Vertical 2040 along the Horizontal 2040.

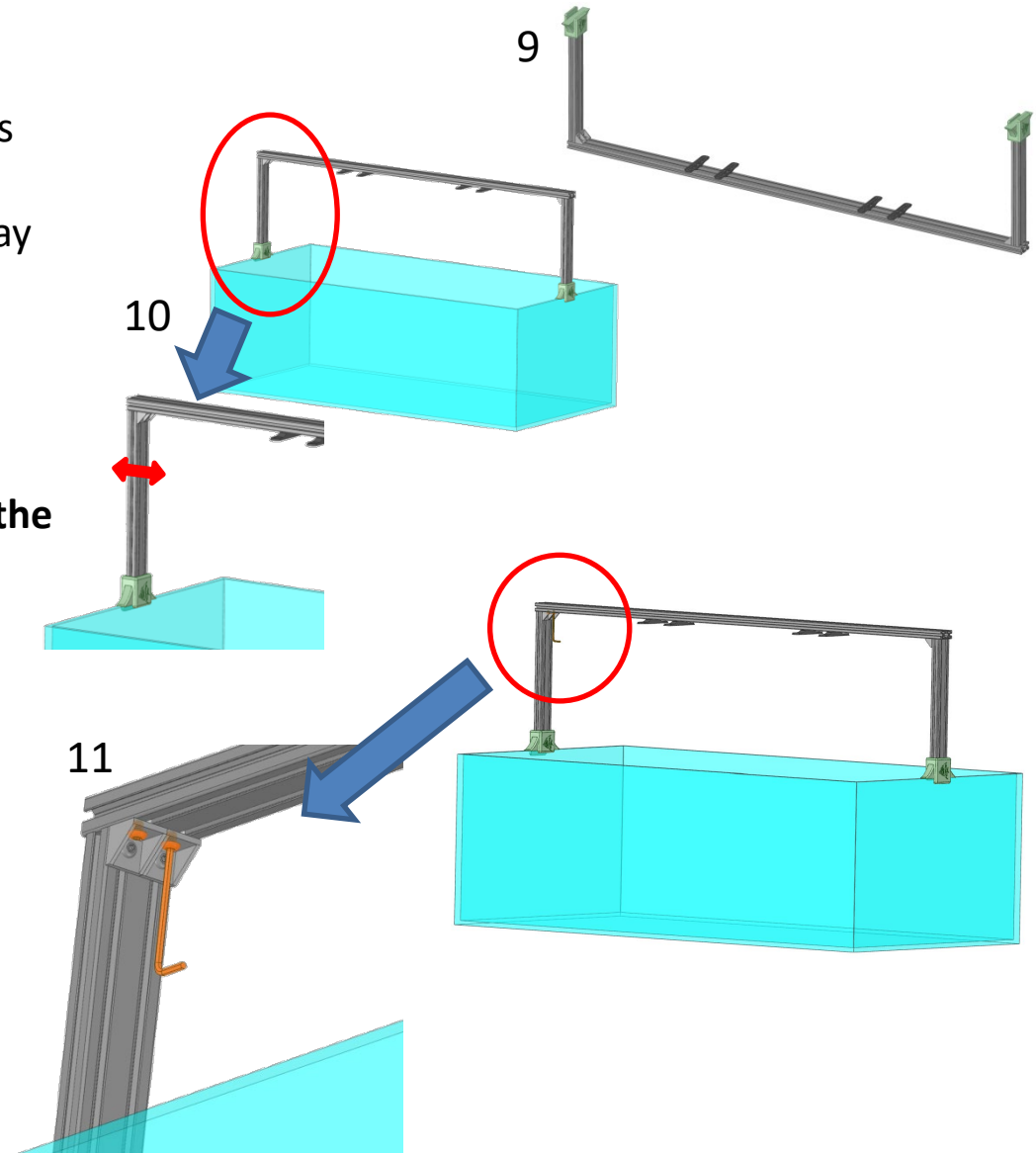


# Eurobraced Assemble Instructions

9. Place the 2x Eurobraced 2040 Across Tank Mounts on the Vertical 2040. Use rubber mallet to tap it all the way in if needed.

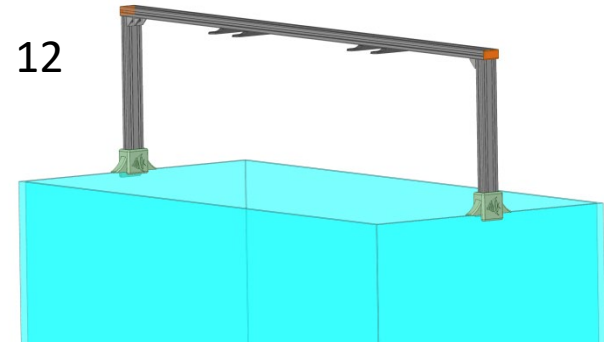
10. With 2<sup>nd</sup> person for assistance place the entire assemble on your tank. **Slide the loose Vertical 2040 along the Horizontal 2040 to place on tank.**

11. Once placed squarely on your tank, tighten down the 2x M5\*6 screws securely.



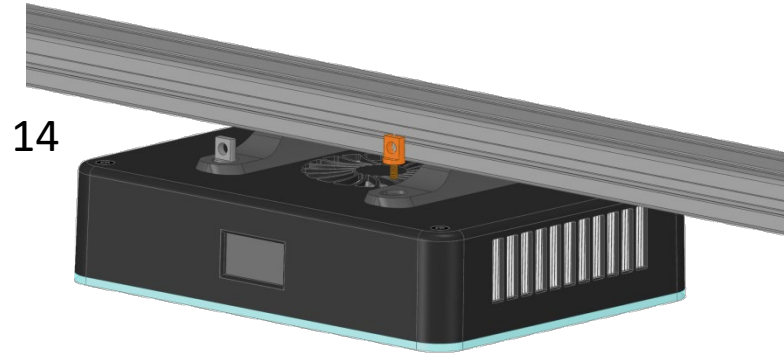
# Eurobraced Assemble Instructions

12. Place the 2x 2040 black end caps.

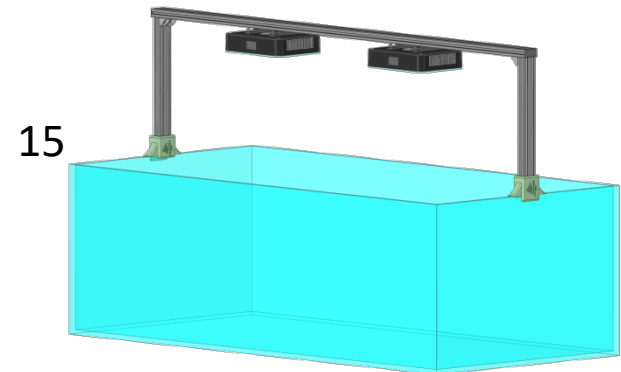


13. Place a cover over your tank in case screws get dropped.

14. Hold the ReeFi Uno over the 2040 Slide-On Adaptor and use 4x Eyelet screws (included with the ReeFi Uno) to secure the Uno. Use 2<sup>nd</sup> person for assistance if necessary.

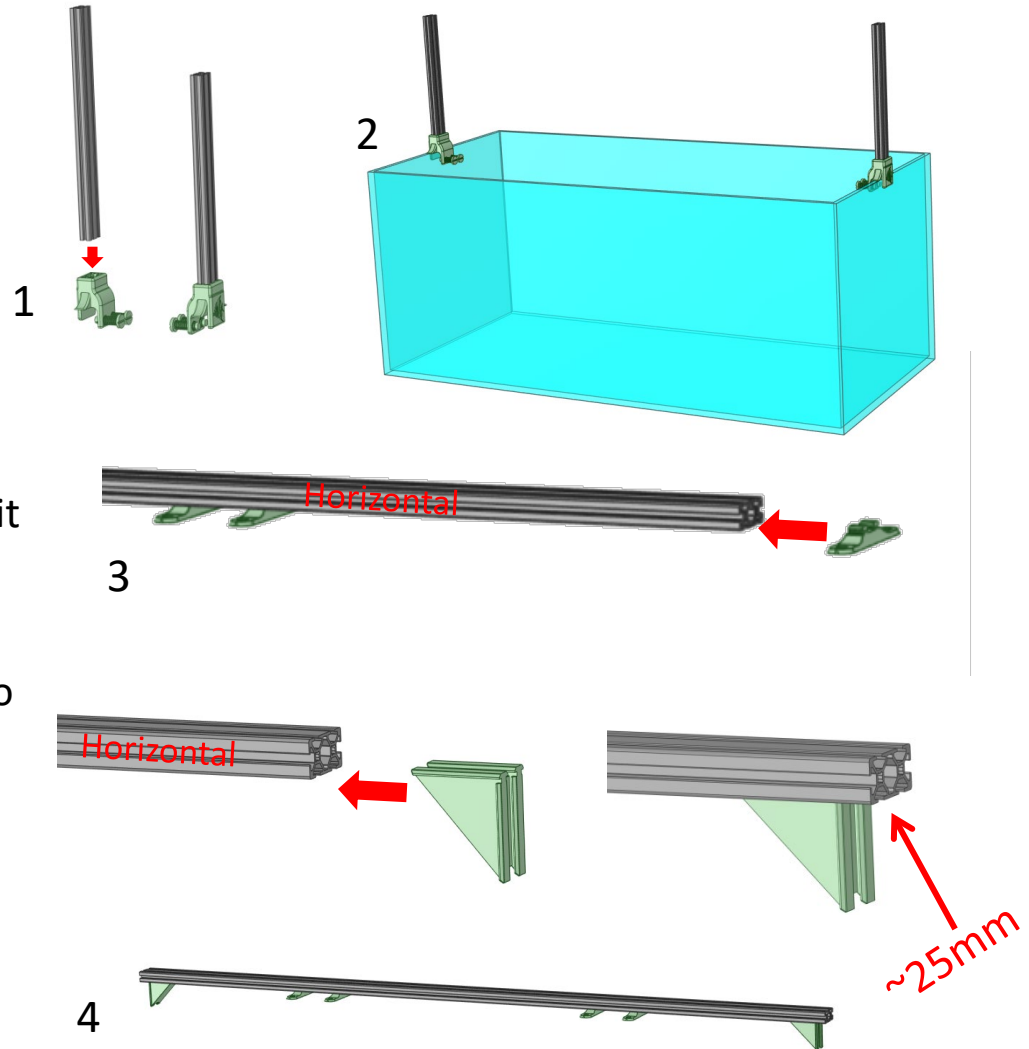


15. Repeat Step 14 for all ReeFi Unos.



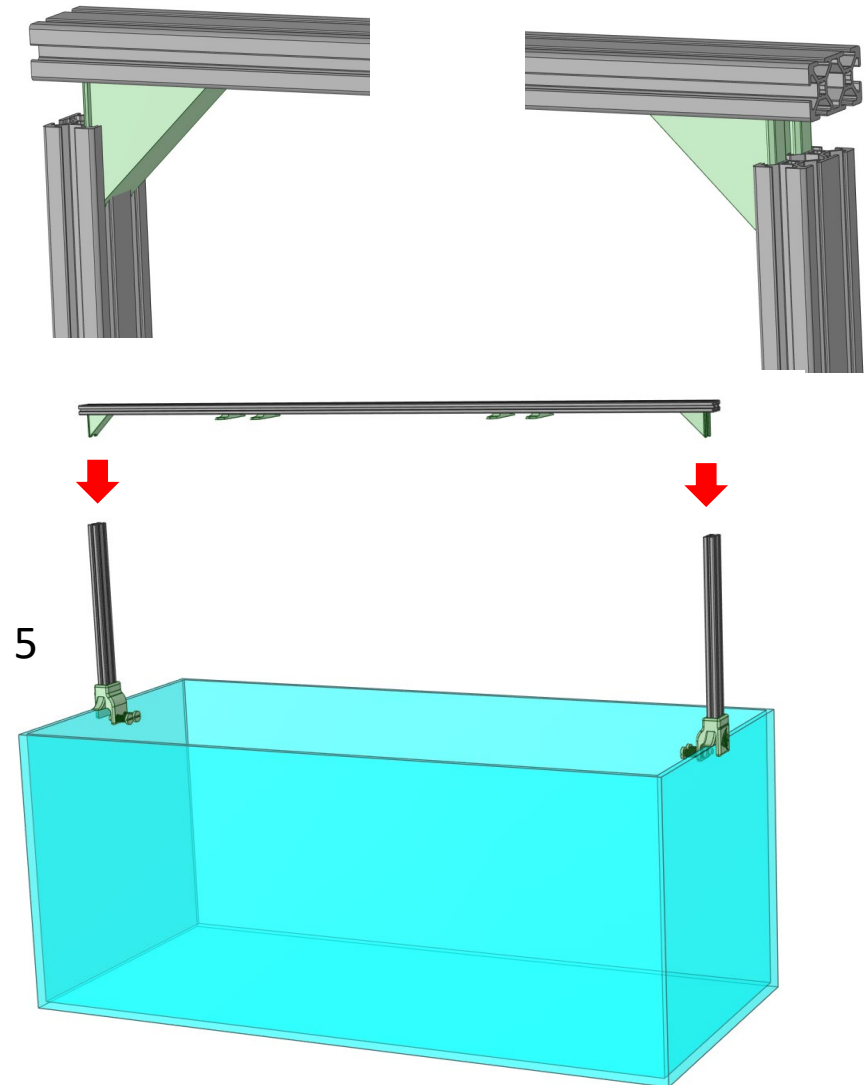
# Rimless/Standard Assemble Instructions

1. Insert Vertical 2040 into the 2040 Across Tank Mounts. Use rubber mallet to tap it all the way in if needed.
2. Place above onto your tank rim and secure with screw. **Do not over tighten.** Just tighten enough to keep it in place.
3. Slide in 2040 Slide-On Adaptors for Uno onto the Horizontal 2040, 2pcs for every ReeFi Uno series.
4. Insert the Corner into the Horizontal 2040 on both ends. Insert pass by ~25mm.



# Rimless/Standard Assemble Instructions

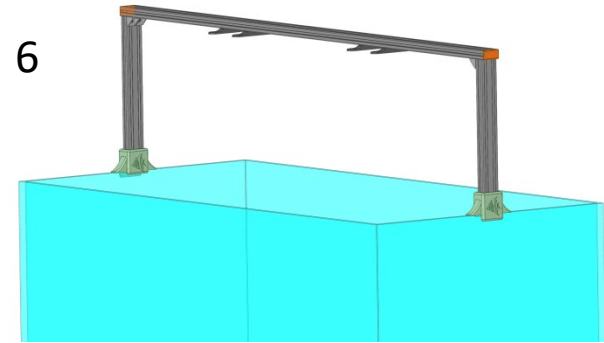
5. Lift the Horizontal 2040 over the tank and insert the 2 Corners into the Vertical 2040.





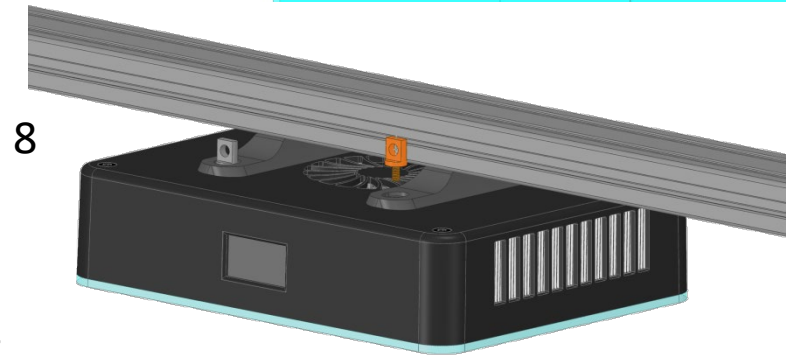
# Rimless/Standard Assemble Instructions

6. Place the 2x 2040 black end caps.



7. Place a cover over your tank in case screws get dropped.

8. Hold the ReeFi Uno over the 2040 Slide-On Adaptor and use 4x Eyelet screws (included with the ReeFi Uno) to secure the Uno. Use 2<sup>nd</sup> person for assistance if necessary.



9. Repeat Step 8 for all ReeFi Unos.

