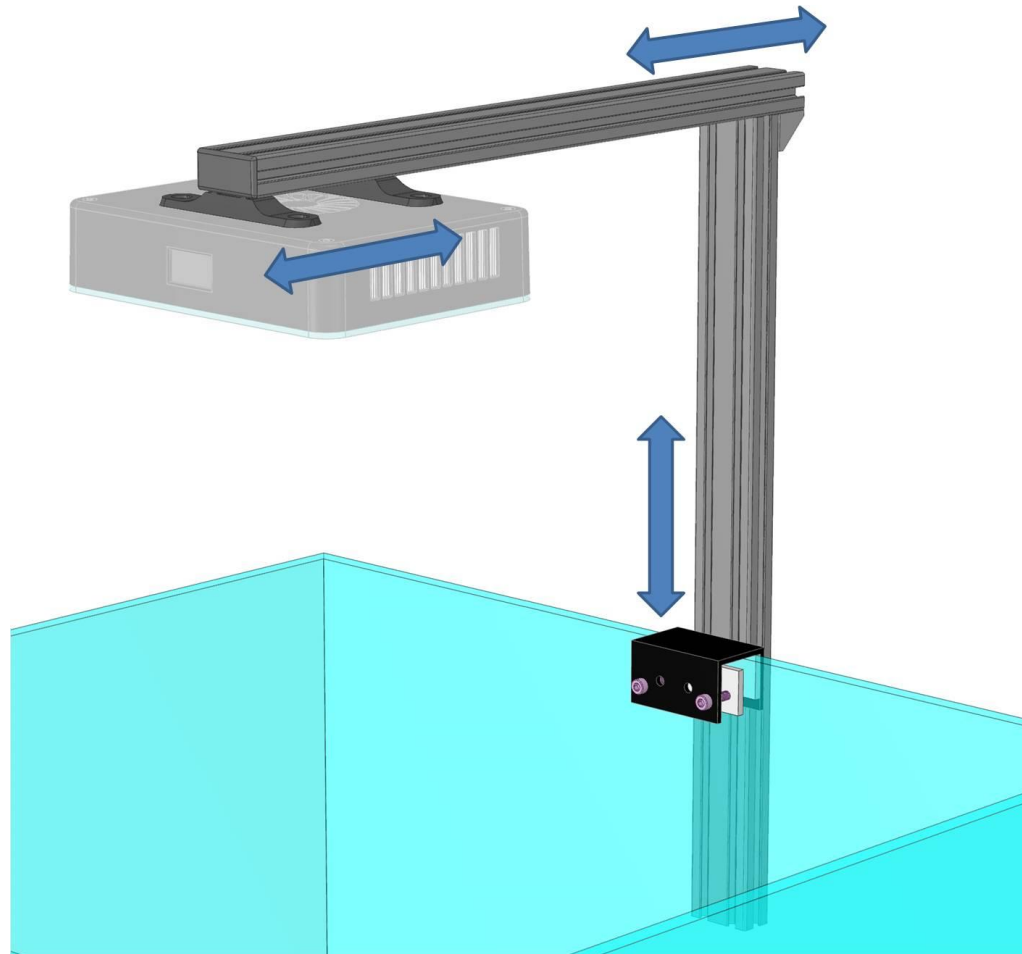
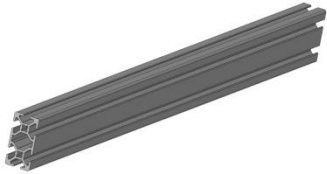


ReeFi Tank Mount Kit for Uno

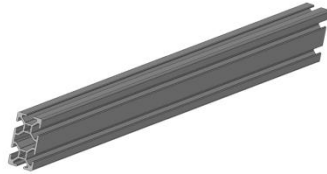
Assemble Instructions



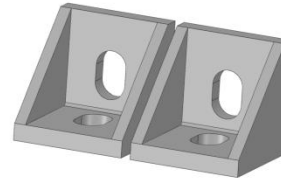
Parts List



400mm (15.75") 2040 Black Anodized Aluminum



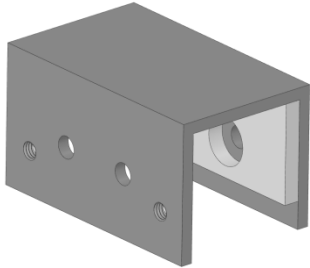
450mm (17.72") 2040 Black Anodized Aluminum



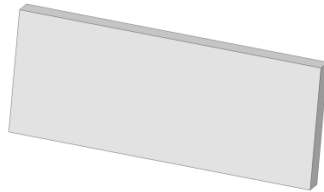
Black Anodized Corner Brackets set (2 pcs)



2040 Slide-On Adaptors set (2 pcs) for ReeFi Uno



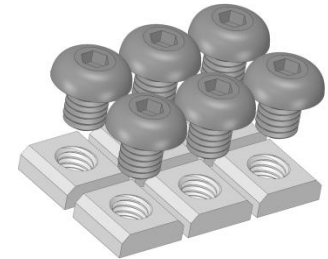
U Bracket Tank Mount



Acrylic Spacers to protect glass tank



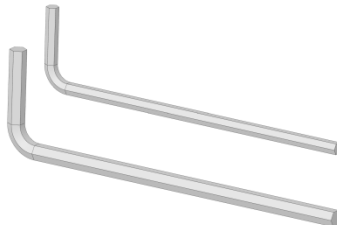
4x M5*25 marine grade stainless steel hex screws (2 required, 2 extra)



6x M5 T nuts and screws



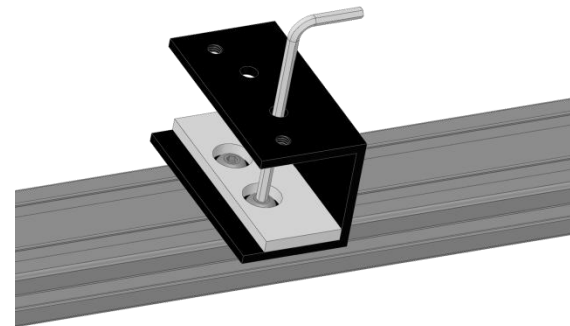
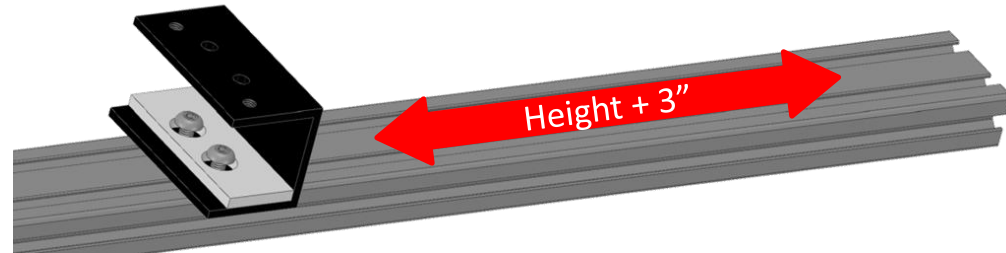
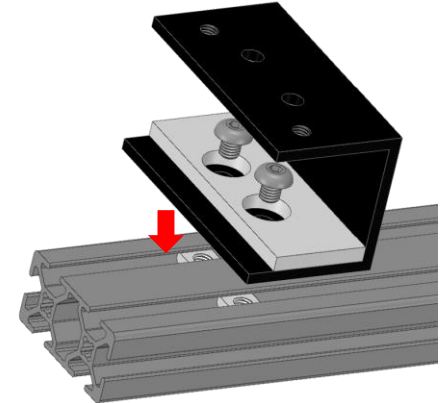
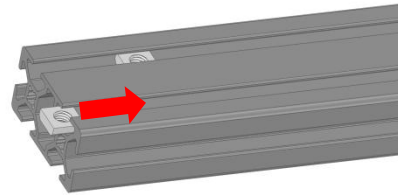
2040 black end cap



4mm and 3mm hex wrench

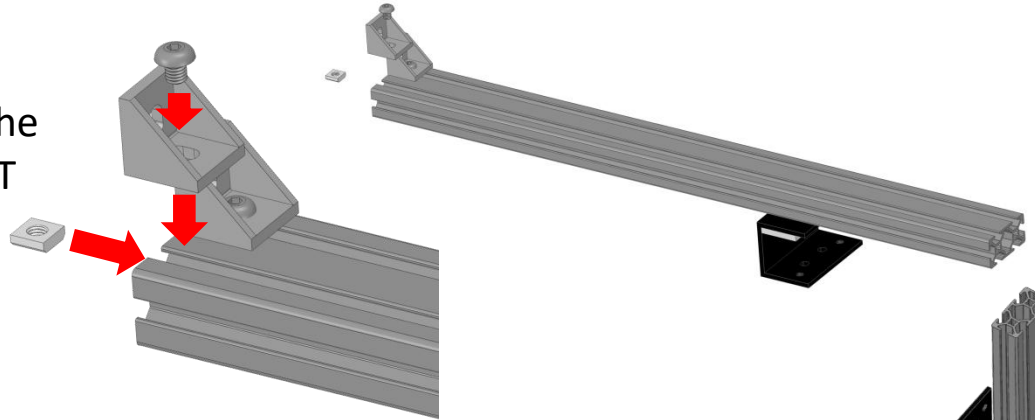
Assemble Instructions

1. Slide 2 T Nuts into 2040 Aluminum as shown.
2. Lightly attach U Bracket Tank Mount with 2 M5*6 screws to the above T Nuts.
3. Position the U Bracket Tank Mount along the 2040 Aluminum such that the desired mounting height to tank rim plus 3".
4. Use the 3mm Hex Wrench to tighten down on the 2 screws to secure the U Bracket Tank Mount to the 2040 Aluminum.
5. It's important that the U Bracket must be squared with the 2040 Aluminum. Loosen one screw at a time to square the U Bracket if needed then tighten the screws down.

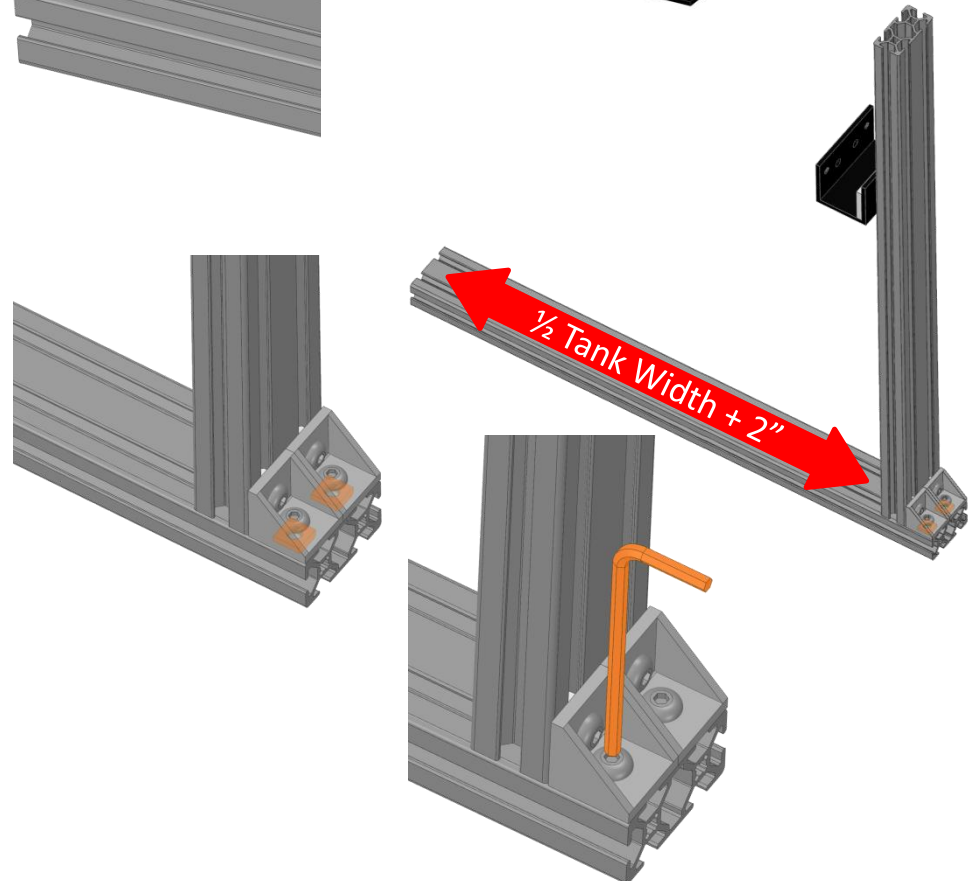


Assemble Instructions

6. Lightly attach the 2 L Brackets to the top of the 2040 Aluminum with 2 T Nuts and 2 M5*6 screws.



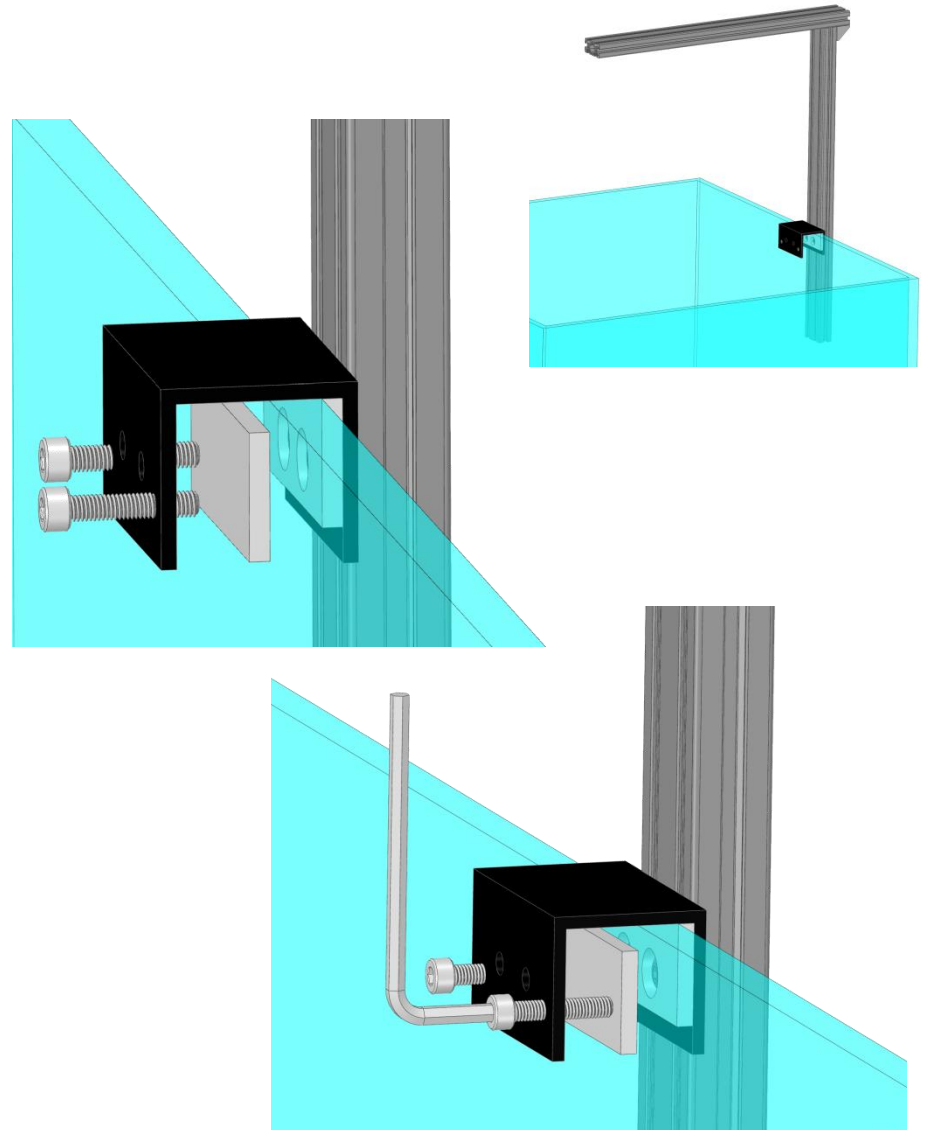
7. Lightly attach the other 2040 Aluminum to the 2 L Brackets with 2 T Nuts and 2 M5*6 screws as shown. Then adjust the 2040 Aluminum to $\frac{1}{2}$ tank width plus 2".



8. Ensure the 2 2040 Aluminums and the 2 L Brackets are completely squared then use the 3mm Hex Wrench to tighten down all 4 screws.

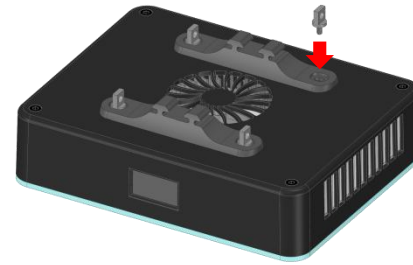
Assemble Instructions

9. With 2nd person for assistance to hold tank mount on the tank rim, place and hold the Acrylic Spacer against the inside glass tank and lightly screw on the 2 Marine Grade Stainless Steel M5*25 screws.
10. Both Marine Grade Stainless Steel screws need to press against the Acrylic Spacer to protect the glass.
11. With the 2 screws screwed on by hand, use the M4 Hex Wrench to only tighten enough so the tank mount will not sag. **This usually only requires about ½ to 1 full turn.**

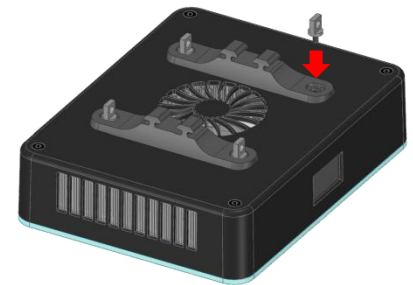


Assemble Instructions

12. Secure the 2040 Slide-On Adaptors to the ReeFi Uno using the 4 clevis screws from the ReeFi Uno's wire hanging kit bag either in parallel or perpendicular to the 2040 Aluminum.



Perpendicular



Parallel

13. Slide the ReeFi Uno onto the 2040 Aluminum. Then place on the 2040 end cap.

